

TAFLEN NEWYDDION CYMUNEDOL
LLANDYFAELOG
COMMUNITY NEWSLETTER

CYFLWYNIAD / INTRODUCTION

Croeso i Rifyn Hâf Daflen Newyddion Chwarterol Cymunedol Llandyfaelog.

Cyhoeddir y Daflen Newyddion trwy'r Wefan Gymunedol www.llandyfaelog.org.uk, ond os hoffech gael eich cynnwys ar y rhestr dosbarthiad trwy e-bost, cysylltwch ag Arfon Davies Clerc Cyngor Cymuned Llandyfaelog Llandyfaelog@btinternet.com

Er eich gwybodaeth mae'r rhannau Gymraeg o'r Cylchlythyr mewn coch â'r Saesneg yn glas.

Bydd y Clerc yn hapus i dderbyn eich sylwadau neu erthyglau ar gyfer y Rhifyn nesaf erbyn 1af Medi 2018.

Welcome to the Summer Edition of the Llandyfaelog Quarterly Community Newsletter.

The Newsletter is published on the Community Website www.llandyfaelog.org.uk, however if you would like to be included on the email distribution list, please contact Arfon Davies, Llandyfaelog Community Council Clerk Llandyfaelog@btinternet.com

For ease of reference the parts of the Newsletter in Welsh are in red with the English in Blue.

The Clerk will be happy to receive your comments or articles for the next Edition by 1st September 2018.

Cyngor Cymuned Llandyfaelog Community Council

Dyddiadau Cyfarfodydd y Cyngor	Council Meeting Dates
7 Mehefin 7.30yh, Neuadd Llandyfaelog	7 June 2018 7.30pm Llandyfaelog Hall
5 Gorffennaf 7.30yh, Neuadd Llandyfaelog	5 July 7.30pm, Llandyfaelog Hall

Cyfarfod Blynyddol

Yn Cyfarfod Blynyddol Cyngor Cymuned Llandyfaelog gynhaliwyd ar 3ydd Mai, etholwyd y Cyng Eifion Jones yn Gadeirydd gyda'r Cyng Rheinallt Jones yn Is-Gadeirydd. Diolchodd y Cadeirydd y cyn Cadeirydd Janet Knott am ei arweinyddiaeth trwy'r flwyddyn ddiwethaf.

Annual Meeting

At the Annual Meeting of Llandyfaelog Community Council held on the 3rd May, Cllr Eifion Jones was elected Chairman for the ensuing year with Cllr Rheinallt Jones as Vice-Chairman. The Chairman thanked the past Chairman Cllr Janet Knott for her leadership throughout the previous year.



Cadeirydd y Cyngor, Cyng Eifion Jones yn derbyn Cadwyn y Cadeirydd wrth y Cyng Janet Knott
Council Chairman, Cllr Eifion Jones receives the Chairman's Chain from Cllr Janet Knott

Cwmffrwd Seventh Day Adventist Church

Plant based **Cooking classes** every 3rd Monday of the month 7pm- 9pm at the SDA church Cwmffrwd. Learn how to cook and taste delicious plant based meal. Everyone welcome including children. Admission £2.50 per session. Children free.

Health Seminars every Wednesday at 7pm at the SDA church Cwmffrwd. Topics include: Overcoming Depression, Overcoming Stress, Overcoming Grief, etc. Free admission.

To find out more or to book a place contact Uschi Mertens on 01559 363360/ 07870 840879.

Cyngor Cymuned Llandyfaelog Community Council

Clerc/Clerk: Arfon Davies

Ffôn / Tel: 01267 267647

Ebost / Email: Llandyfaelog@btinternet.com

Gwefan / Website: www.llandyfaelog.org.uk

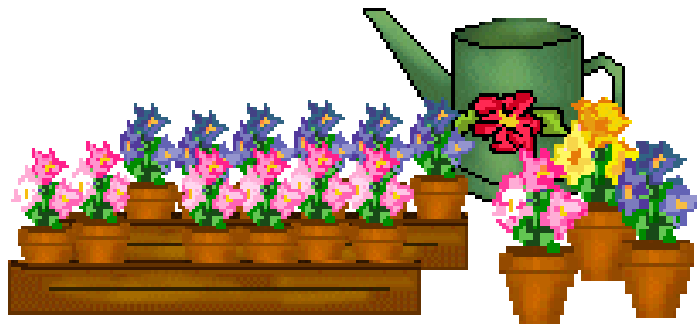
Cystadleuaeth Gardd Gymunedol

Mae'r Cyngor Cymuned yn cynnal cystadleuaeth i ddod o hyd i ardd orau'r Gymuned. Hoffem dderbyn eich enwebiadau am yr ardd gorau i'r Clerc erbyn dechrau mis Mehefin.

Mae yna tri chategori - Ardd Blodau Bach, Ardd Blodau Mawr a Gardd Llysiau

Bydd yr erddi enwebedig yn cael eu barnu yn ystod Misoedd Mehefin a Gorffennaf, gyda'r enillwyr yn derbyn gwobrau a lluniau yn y Cylchlythyr Cymunedol.

Cysylltwch gyda'r Clerc am wybodaeth bellach.



Community Garden Competition

The Community Council is holding a competition to find the best garden in the Community. Please provide nominations to the Clerk for the best garden by the beginning of June.

There are three categories – Small Flower Garden, Large Flower Garden and Vegetable Garden.

The nominated gardens will then be judged in June and July with the winners receiving prizes along with pictures in the Community Newsletter.

Please contact the Clerk for more information.

**Pwyllgor Neuadd Gymunedol Llandyfaelog
Llandyfaelog Community Hall Committee**

**Ysgrifennydd / Secretary: Arfon Davies
Ffôn / Tel: 01267 267647
Ebst / Email: Llandyfaelog@btinternet.com
Gwefan / Website: www.llandyfaelog.org.uk**

Agoriad Swyddogol Ardal Chwarae Gymunedol Llandyfaelog

Cynhelir Agoriad Swyddogol Ardal Chwarae Gymunedol Llandyfaelog ddydd Sadwrn

**23^{ain} Mehefin o 2yh. Cynhelir Chwiliad Eirth Tedi yn y pentref
ac yna'r seremoni agoriadol am 3yh.**

Bydd lluniaeth ar gael yn y Neuadd. Mwy o fanylion ar gael wrth yr Ysgrifennydd.



Official Opening of the Llandyfaelog Community Play Area

The Official Opening of the Llandyfaelog Community Play Area will be held on Saturday 23rd June from 2pm. A Teddy Bear Hunt will be held in the village followed by the opening ceremony at 3pm.

Refreshments will be available in the Hall. More details from the Secretary.

Ariannwyd gan / Funded by



**ARIENNIR GAN Y
LOTERI GENEDLAETHOL
NATIONAL
LOTTERY FUNDED**



**Cyngor Cymuned
Llandyfaelog
Community Council**



**THE MILLENNIUM STADIUM
CHARITABLE TRUST
YMDDIRIEDOLAETH ELUSENNOL
STADIWM Y MILENIWM**

Clwb 100 2018

Ebrill

1af	£30.00	98	Melanie Phillips-Rees
2il	£20.00	97	Lynwen a Hugh Anderson
3ydd	£10.00	67	Wyn Jones, Darwyn, Llandyfaelog

100 Club 2018

1 st	£30.00	98	Melanie Phillip-Rees
2 nd	£20.00	97	Lynwen and Hugh Anderson
3 rd	£10.00	67	Wyn Jones, Darwyn, Llandyfaelog

Hanes Cymunedol **Community History**

Gweler isod rhai eitemau hanes diddorol ein cymuned, gweler y wefan gymunedol am ragor o wybodaeth.

Bryn Gwanws

Afon fach yw'r Gwanws, yn tarddu yn un o gaeau Fferm Capel ac yn rhedeg i lawr i bentref Pentrepoeth trwy Gaeau Bryngwanws, ac ar un pwynt ceir trobwl dwfn. Mae'r afon yn llifo i Groesyceiliog cyn ymuno â'r Tywi.

Pentrepoeth

Mae'r pentrefan yn eistedd mewn dyffryn rhwng Idole a Chroesyceiliog gyda hen ffordd droellog o'r enw Cwmale yn ffurfio cyffordd yn ei ganol. Ar hyd Cwmale roedd darn o dir rhydd a adwaenwyd fel Comin Waun Llefris.

Bu Anghydfurfwyr yn cwrdd i ddechrau yng nghartref Nell Francis ym Mhentrepoeth a dywedir eu bod wedi cael y fraint o gwmni John Penry y Merthyr a grogwyd ym 1593.

Credir ei fod wedi pregethu mewn man ger Bryn Beulah.

Melin Plas Gwyn

Dechreuodd y symudiad anghydfurfwyr o fewn y Gymuned gydag ychydig o bobl oedrannus yn cwrdd mewn bwthyn adfeiliedig ger y man lle mae Melin Plas Gwyn nawr yn sefyll.

Ger Melin Plas Gwyn mae rhan o hen ffordd Rufeinig, sy'n rhedeg yn gyfochrog â'r llinell reilffordd. Mae'n debygol y teithiodd Gruffydd ap Rhys ar hyd y ffordd hon i ymosod ar Gastell Cydweli.

Please see below some interesting historical items from our Community, please see the Community Website for more information

Bryn Gwanws

A small river, the Gwanws has its source in one of the Capel Farm fields and runs down to the village of Pentrepoeth through Bryngwanws Fields, at one point there is a deep whirlpool. The river flows to Croesyceiliog before it enters the Towy.

Pentrepoeth

The hamlet sits in a valley between Idole and Croesyceiliog with an old winding road called Cwmale forming a junction at its centre. Along Cwmale was a stretch of free land known as Waun Llefris Common.

Nonconformists initially met at the home of Nell Francis in Pentrepoeth and it is said were honoured by the presence of John Penry the martyr who was hanged in 1593

He is thought to have delivered his sermons at a spot near Beulah Hill.

Melin Plas Gwyn

The nonconformist movement within the Community commenced with a few elderly people meeting at a dilapidated cottage near the site where Melin Plas Gwyn now stands.

Near Melin Plas Gwyn is a stretch of old Roman road, running parallel with the railway line. It is probable that Gruffydd ap Rhys travelled along this road to attack Kidwelly Castle.

JUNE WORD SEARCH

U Y D P S R N J U N E Q
 M V C I J E N J G U X K
 I N A R Q M O Q B P C V
 G P N T T M I L D G A C
 A A O E B U T M B N M O
 R A E X H S A X E S P L
 R W I D D I C Y A O I L
 K L N N A S A T C S N E
 X P G E L Q V V H S G G
 G R A D U A T I O N T E
 D D F Z D K X C Q B J I
 A N N I Z S S C H O O L

Beach	June
Camping	School
Canoeing	Summer
College	Trip
Graduation	Vacation





Chwilair Y Tri Mochyn Bach



m	o	ch	y	n	a	d	r	b	s
b	ch	w	y	th	u	c	e	l	i
a	y	r	m	a	m	i	w	a	m
d	g	b	h	p	ll	c	o	i	n
e	t	r	i	w	r	t	u	dd	a
i	ff	i	r	rh	th	e	ch	ll	i
l	s	c	m	a	w	r	n	o	p
a	f	i	ng	g	c	a	s	j	ph
d	u	a	g	w	e	ll	t	n	w
u	n	u	m	c	f	a	b	a	ch

mochyn
tri
blaidd
gwellt
pren

briciau
chwythu
simnai
adeiladu

mawr
bach
mami
cas

Enw: _____

17.02.14